

SimStack™

By Simulator Solutions

EXPERIENCE

Simulator Solutions provides innovative hardware solutions and leading services to the simulations industry, with more than 30 years of experience.

- Design
- Integration
- Modification
- Support

SOLUTIONS

SimStack – a cost effective modular, scalable I/O solution designed to interface hardware directly to simulator software without complex or destructive modifications.

Features include stackable design, ethernet connectivity, flexible voltages, support for many protocols and a programmable onboard processor.

SERVICES

Specialising in refurbishment of existing simulators to improve reliability and decrease maintenance costs.

Providing experienced, independent guidance to design, tender selection, construction, commissioning and integration.

BENEFITS

- Single solution for all your interface needs
- Cost effective
- Scalable & adaptable
- Active or passive endpoints

FEATURES

- Supports multiple voltages & high current
- Configurable supply or ground switching
- Support for standard bus protocols
- Interrupt driven hardware

INDUSTRIES

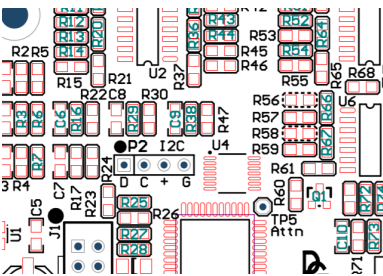
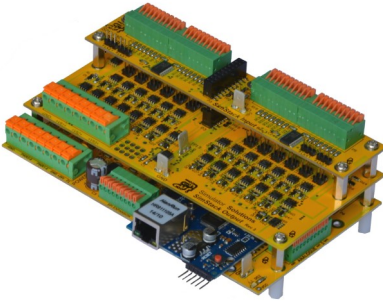
- Aerospace
- Marine
- Automotive
- Defense



Simulator Solutions

Product Information

DESIGN AND INTERFACE



BUILD AND INSTALL



SimStack Features

| | |
|--|---|
| Ethernet communication | Data exchange and configuration via ethernet |
| Active or passive endpoint | Incorporates programmable microcontroller |
| 128 digital inputs^[1] | Interrupt driven to ensure non-blocking behaviour |
| 120 digital outputs^[1] | <ul style="list-style-type: none"> • Switch up to 32V DC per channel • Up to 3A per channel / 30A per board • Up to 4096 steps PWM on each output • Supply or ground switching |
| 8 to 16 analog inputs^[1] | <ul style="list-style-type: none"> • 8 onboard analog or 16 expansion inputs • Up to 16 bit analog resolution |
| Connector options | <ul style="list-style-type: none"> • Spring loaded • Plugable headers |
| DIN Rail mount | Optional mount available |
| Enclosure | Optional enclosure available |
| Modern platforms | Java and C++ for broad OS support |
| Hardware interfaces | <ul style="list-style-type: none"> • Serial • I2C • SPI • ARINC 429 / 739 • MODBUS • CANBUS • NMEA • Synchros and Resolvers • Power Monitor <p>(Others on request)</p> |
| Simulator integration | <ul style="list-style-type: none"> • Prepar3d • DSix • XPlane • Precision Simulator • ProSim • General API interface <p>(Others on request)</p> |
| Software integration | Integrates with SimControl for full simulator and environmental monitoring and control |

^[1] May be lower depending on attached hardware and software configuration

CUSTOM SOLUTIONS

Simulator Solutions have over 20 years experience developing customised software and hardware solutions. Let our experience find the right solution for your simulation challenges.